

1(B) Population

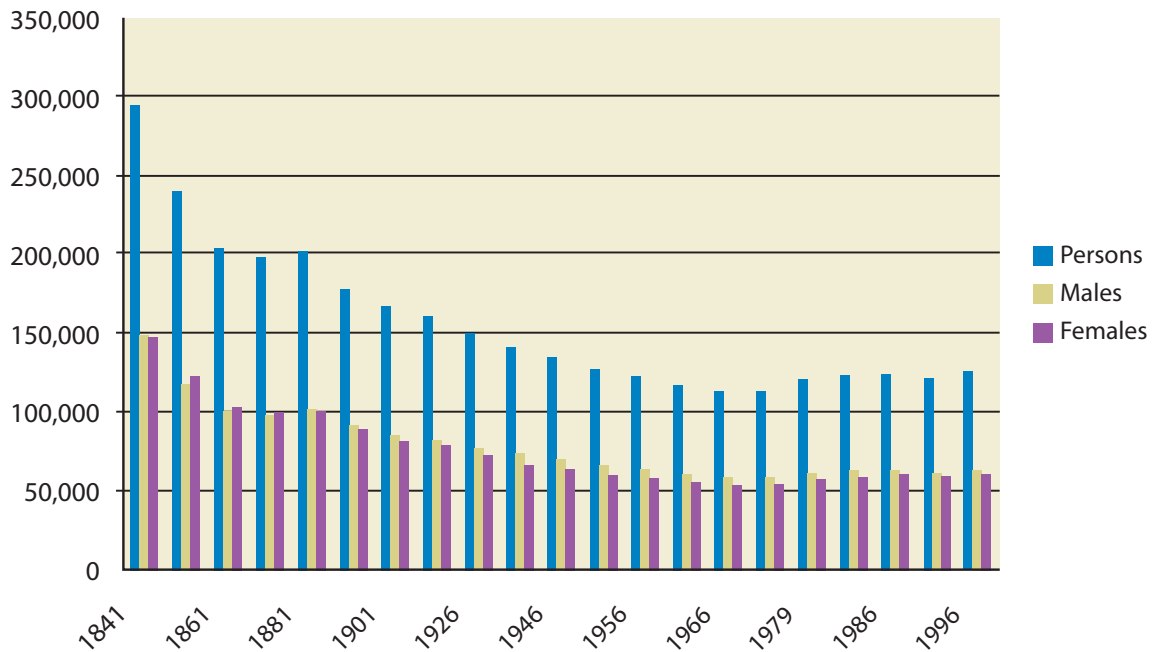
In 1991, the population of the State was 3,525,719. In 1996 this increased to 3,626,087 (**2.8% increase**). In Munster the population in 1991 was 1,009,533 an increase of **2.4%** (24,370 people), was recorded in 1996. County Kerry experienced a **3.5%** increase during the same period.

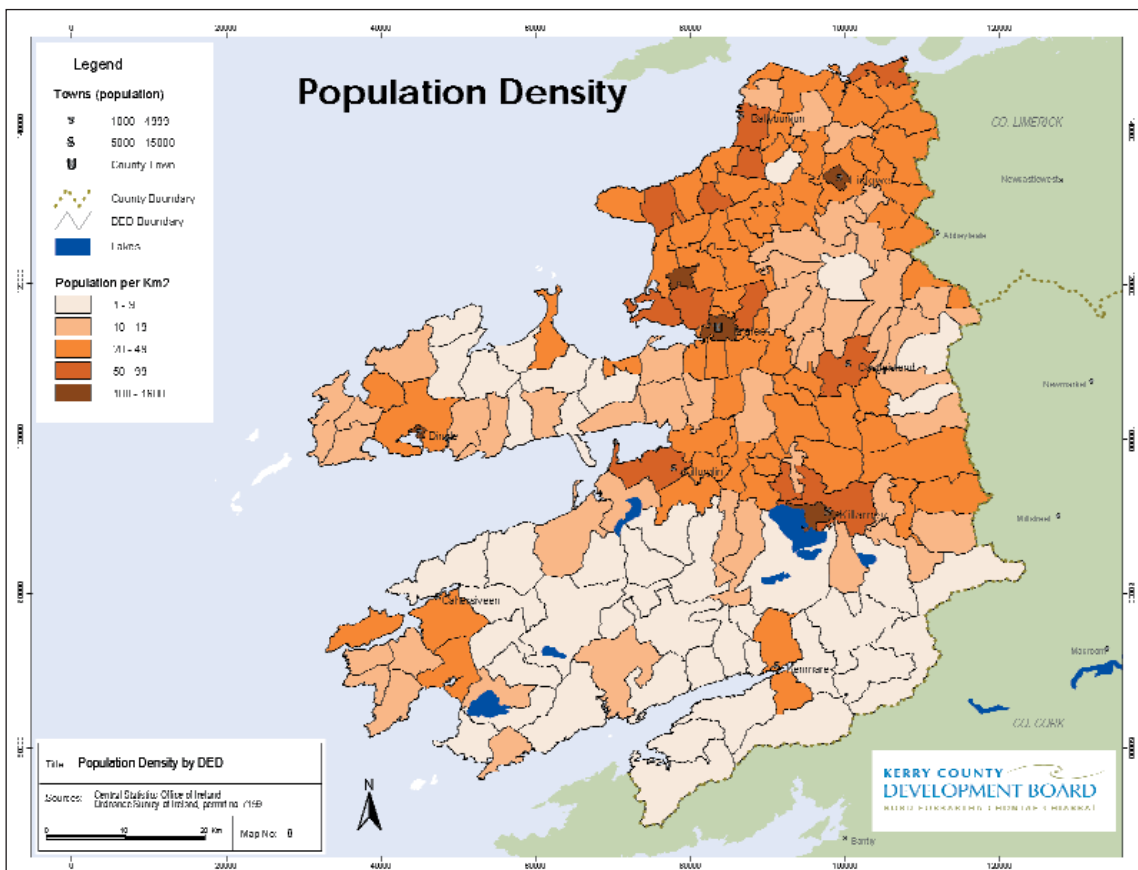
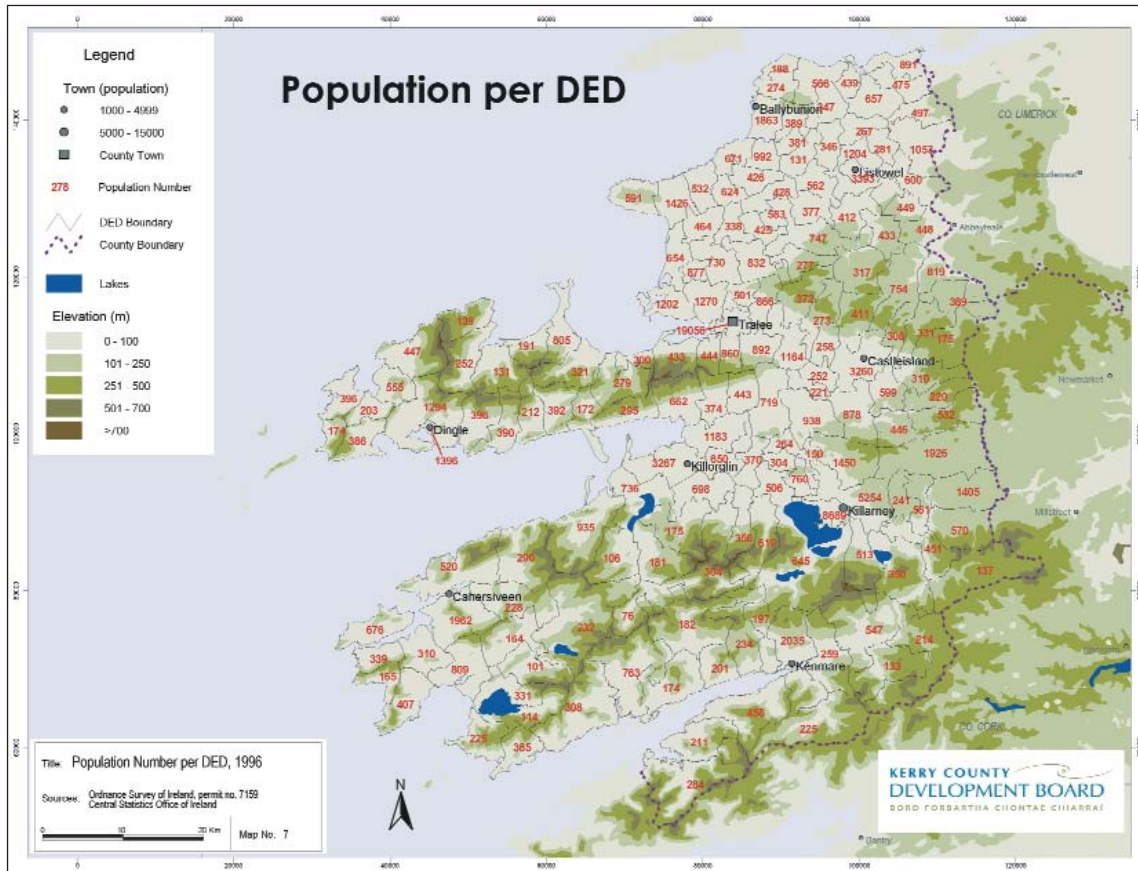
In 1996, the population was 126,130 - 63,801 males and 62,329 females. In the age group 20 - 59 there were 13,172 single males and 8,896 single females (Portrait of Kerry, 1996).

| YEAR | POPULATION | | |
|------|------------|---------|---------|
| | Males | Females | Total |
| 1841 | 147,307 | 146,573 | 293,880 |
| 1851 | 116,511 | 121,743 | 238,254 |
| 1861 | 99,999 | 101,801 | 201,800 |
| 1871 | 97,913 | 98,673 | 196,586 |
| 1881 | 101,208 | 99,831 | 201,039 |
| 1891 | 91,017 | 88,119 | 179,136 |
| 1901 | 84,427 | 81,299 | 165,726 |
| 1911 | 81,474 | 78,217 | 159,691 |
| 1926 | 76,863 | 72,308 | 149,171 |
| 1936 | 73,503 | 66,331 | 139,834 |
| 1946 | 70,113 | 63,780 | 133,893 |
| 1951 | 66,507 | 60,137 | 126,644 |
| 1956 | 63,965 | 58,107 | 122,072 |
| 1961 | 60,838 | 55,620 | 116,458 |
| 1966 | 58,674 | 54,111 | 112,785 |
| 1971 | 58,404 | 54,368 | 112,772 |
| 1979 | 62,185 | 58,171 | 120,356 |
| 1981 | 63,492 | 59,278 | 122,770 |
| 1986 | 63,293 | 60,866 | 124,159 |
| 1991 | 61,932 | 59,962 | 121,894 |
| 1996 | 63,801 | 62,329 | 126,130 |

Source: CSO

POPULATION OF KERRY 1841 - 1996





County Kerry is divided into five LEAs, three in north of the county, Tralee, Killarney and Listowel and two in the South, Killorglin and Dingle.

There is a significant population variation at the District Electoral Division (DED) level ranging from 76 people living in Cloon in the hearth of the Ring of Kerry to 19,056 in Tralee urban. The lowest population occurs in the more mountainous DEDs of the Ring of Kerry and Dingle peninsula.

Population of LEA is by no means evenly distributed with Tralee urban and rural area dominating despite the fact that it is the smallest in size. Both Killarney urban and rural and Listowel rural are next most important in terms of population followed by Killorglin and Dingle.

Table 1 (Table 4 of Kerry Atlas)

POPULATION BY LEA 1996

| LEA | Population |
|------------------|----------------|
| Dingle | 12,940 |
| Killarney Rural | 20,452 |
| Killarney Urban | 8,689 |
| Killorglin | 21,025 |
| Listowel Rural | 23,161 |
| Listowel Urban | 3,393 |
| Tralee Rural | 17,414 |
| Tralee Urban | 19,056 |
| Co. Kerry | 126,130 |

Source: Central Statistics Office. Website: www.cso.ie

1(B.1) Population Density by LEA per Km Sq. 1996

There is higher density in the three urban areas followed by the next highest which are the three rural LEAs of Listowel, Tralee and Killarney.

Table 2 (Table 5 of Kerry Atlas)

POPULATION DENSITY BY LEA PER KM² 1996

| LEA | LEA size km ² | Population Density km ² |
|------------------|--------------------------|------------------------------------|
| Dingle | 714.06 | 18.12 |
| Killarney Rural | 943.42 | 21.68 |
| Killarney Urban | 11.75 | 739.49 |
| Killorglin | 1,777.49 | 11.83 |
| Listowel Rural | 766.65 | 30.21 |
| Listowel Urban | 6.47 | 524.42 |
| Tralee Rural | 643.71 | 27.05 |
| Tralee Urban | 12.19 | 1,563.25 |
| Co. Kerry | 4,875.74 | 25.87 |

Source: Central Statistics Office Website: www.cso.ie

1(B.2)

Population Projection for Tralee and Killarney 2001 - 2011

| Table 3 (Table 9 of Kerry Atlas) | | | | |
|--|------|------------------------|----------------------------|-------------------------|
| THREE POPULATION PROJECTIONS FOR TRALEE AND KILLARNEY 2001 - 2011 (note 1) | | | | |
| | | M2F3 Lowest Prediction | M2F1 Medium-Low Prediction | M1F1 Highest Prediction |
| Tralee | 1996 | 19,900 | 19,900 | 19,900 |
| | 2001 | 21,100 | 21,200 | 21,300 |
| | 2006 | 22,000 | 22,300 | 22,900 |
| | 2011 | 22,500 | 23,200 | 24,100 |
| Killarney | 1996 | 13,900 | 13,900 | 13,900 |
| | 2001 | 14,900 | 14,900 | 15,000 |
| | 2006 | 15,500 | 15,700 | 16,000 |
| | 2011 | 15,800 | 16,300 | 17,000 |

Note 1: See text for explanation of models and how they were applied to Tralee and Killarney, all figures calculated to the nearest 100

Source: Central Statistics Office (1999) Population and Labour Force Projections 2001-2031, Stationery Office, Dublin.
Website: www.cso.ie

* Killarney figures represent both the urban area (as defined by the CSO) and the contiguous built up area in surrounding DEDs of Killarney Rural and Muckross.

The above table indicates Tralee urban experiencing the highest increase followed by Killarney urban then Killarney rural. The overall increase for Kerry from 1991 - 1996 was 4,236, which represents a 3.5% increase.

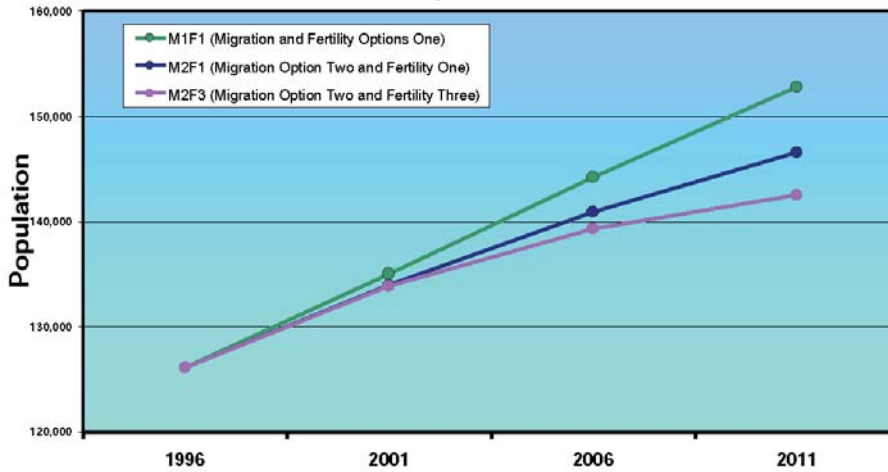
According to Eurogise manipulation of possible scenarios represented by CSO on population projections for Ireland as a whole from 2001 - 2031 Kerry's population will increase by...

| Table 4 (Table 7 of Kerry Atlas) | | | | |
|---|------------------------|----------------------------|-------------------------|--|
| THREE POPULATION PROJECTIONS FOR CO. KERRY 2001 - 2011 (note 1) | | | | |
| | M2F3 Lowest Prediction | M2F1 Medium-Low Prediction | M1F1 Highest Prediction | |
| 1996 | 126,100 | 126,100 | 126,100 | |
| 2001 | 133,800 | 133,900 | 135,000 | |
| 2006 | 139,300 | 140,900 | 144,200 | |
| 2011 | 142,500 | 146,600 | 152,800 | |

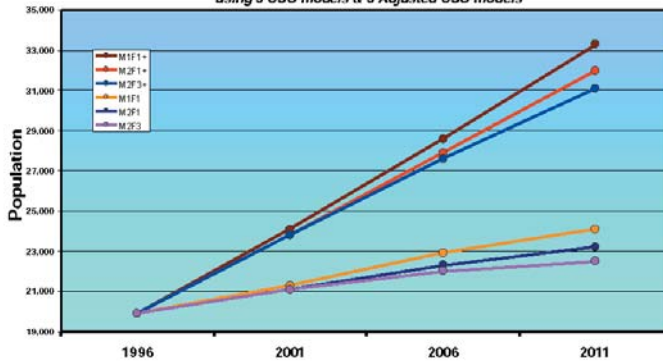
Note 1: See text for explanation of models and how they were applied to Co. Kerry and all figures calculated to the nearest 100 (Kerry Atlas)

Source: Central Statistics Office (1999) Population and Labour Force Projections 2001-2031, Stationery Office, Dublin.
Website: www.cso.ie

Population Projections for Co. Kerry 2001 - 2011
using 3 CSO models



Population Projection for Tralee 2001 - 2011
using 3 CSO models & 3 Adjusted CSO models

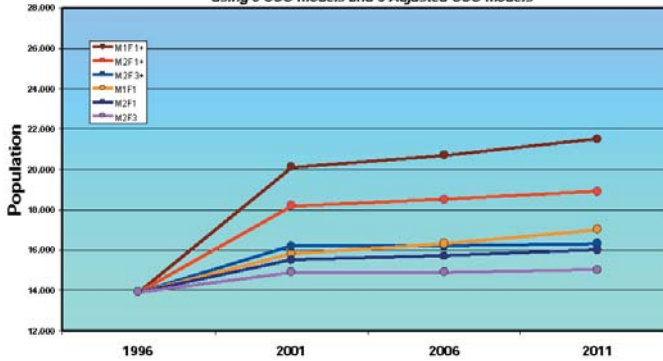


Notes

M1 and M2 - Migration Options one and two
F1 and F3 - Fertility Options one and three

Options with + multiplier based on rural to urban migration. Tralee as predicted with a 2% multiplier (every 5 years) and Killarney with a 1% multiplier (every 5 years).

Population Projections for Killarney 2001 - 2011
using 3 CSO models and 3 Adjusted CSO models



1(B.3)

Percentage population by age structure by LEA 1996

23.7% of the population were between 0 - 14 years, 62.3% were between 15 - 64 and 14% was 65 years old and over.

Total dependency was 37.7% (which is calculated as a percentage of total population, however this figure is underestimated as 15 year olds are included in the work force age band, where as it's compulsory to remain at school until 16 years of age. The vast majority of these 15 - 16 year olds are in full-time education and are dependent. Dependency % is in real terms higher than 37.7%.

1(B.4) Household Density

1996 there were 39,302 households in Kerry average of 3.21 per household.

High household density occur in urban areas. Tralee urban has the highest household density of 508 per km sq, in rural LEA's Listowel rural has the highest with 10 per km sq. The overall rate for county Kerry is 8 households per km sq., Killorglin has the lowest with 4 per km sq.

Table 5 (Table 14 of Kerry Atlas)

HOUSEHOLD DENSITY PER KM² BY LEA 1996

| LEA | LEA size km ² | Household Density per km ² |
|------------------|--------------------------|---------------------------------------|
| Dingle | 714.06 | 6 |
| Killarney Rural | 943.42 | 6 |
| Killarney Urban | 11.75 | 197 |
| Killorglin | 1,777.49 | 4 |
| Listowel Rural | 766.65 | 10 |
| Listowel Urban | 6.47 | 177 |
| Tralee Rural | 643.71 | 8 |
| Tralee Urban | 12.19 | 508 |
| Co. Kerry | 4,875.74 | 8 |

Source: Central Statistics Office. Website: www.cso.ie

1(B.5) Total House Completions/House Prices

One indicator of the level of activity is the number of commencement notices received by Kerry County Council under the Building Regulations.

| HOUSE COMPLETIONS | 1994 | 1998 |
|-------------------|------|-------|
| Private | 845 | 1,513 |
| Total | 949 | 1,638 |

The number of commencement notices are as follows...
(please note that one commencement notice can refer to several houses)

| YEAR | NOTICES |
|------|---------|
| 1996 | 968 |
| 1997 | 1111 |
| 1998 | 1093 |
| 1999 | 1249 |
| 2000 | 1221 |
| 2001 | 1820 |

Source: Kerry County Council

NUMBER OF HOUSES ON THE REGISTER OF RENTED HOUSES 1998 IN COUNTY KERRY

| | | |
|----------------------------------|---|-----|
| 1998 no. houses | = | 917 |
| 1999 no. of registered landlords | = | 499 |

Source: Annual Housing Statistical Bulletin, 1998

HOUSES ADAPTED FOR PEOPLE WITH DISABILITIES

600 grants were provided to individuals by the Southern Health Board between 1996 and 2000, to adapt houses for people with disabilities.

Kerry County Council has provided grant assistance to **507** applicants in the period 1998 - 2001

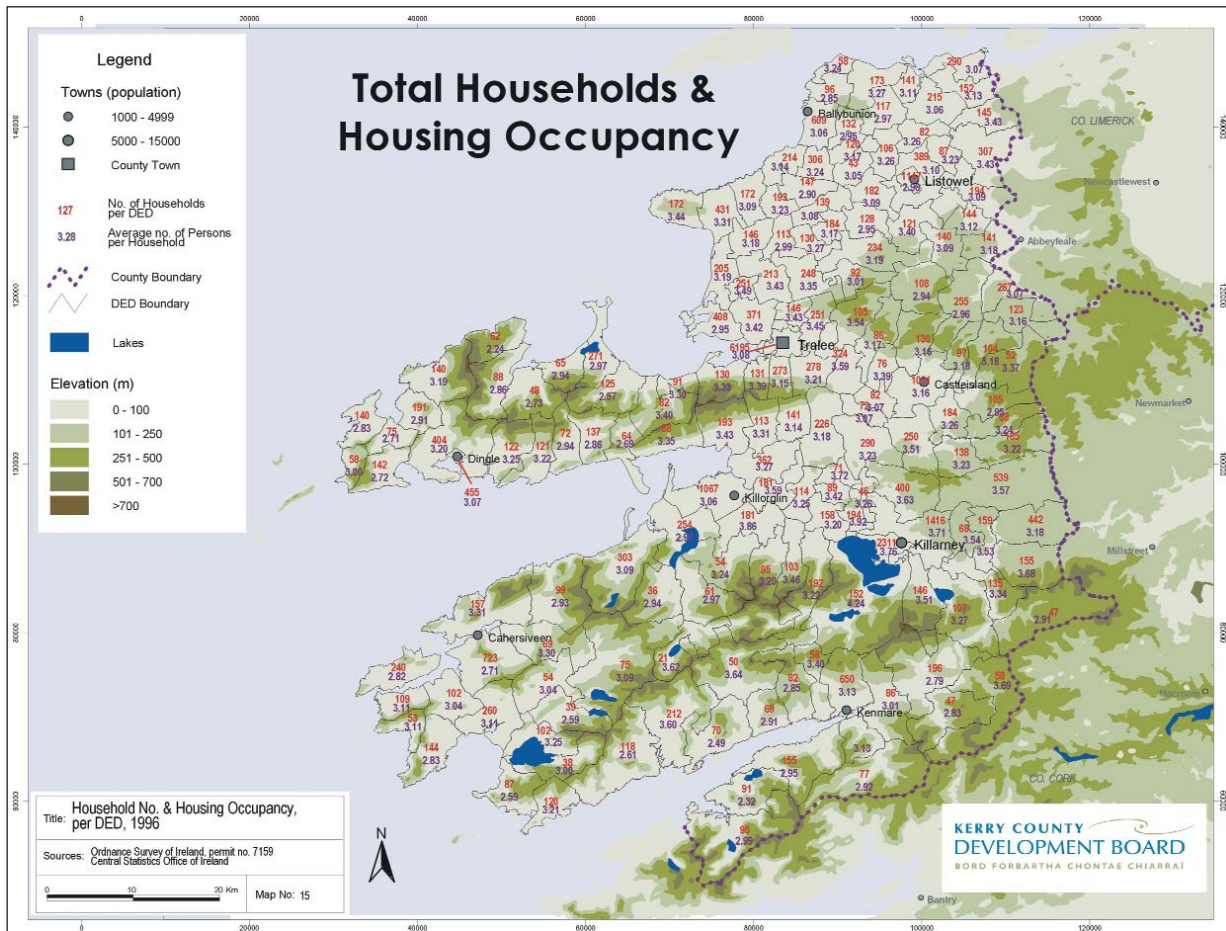
The Average house price in 1999: for example in Tralee the typical house price would be in the following range:

| | |
|-----------------------------------|----------------------------|
| Two bed apartments | £75,000 - £140,000 |
| Town House | £95,000 - £135,000 |
| 3-4 bedroom Sub-Urban Semi | £95,000 - £135,000 |
| 4 Bed detached Urban House | £150,000 - £215,000 |

Source: Shannon Development - Discover Tralee

In the country as a whole excluding Dublin a new house price in 1998 of between £95,000 - £98,000 was purchased for approx. £45,000 in 1989, for approx. £61,000 in 1995 a sharp rise occurred between 1996 - 1998.

Source: Annual Housing Statistical Bulletin, 1998



Summary

- County Kerry covers an area of 4,875 km sq.
- Coastline stretches over 1,000 km.
- Total length of Principle Rivers is over 1,100 km. sq.
- Home to Carrantuohill, the highest mountain in Ireland reaching 1,035 m and the largest native forest, Killarney Oak Wood.
- The Population in 1996 was 126,130 overall increases of 3.5% when compared to 1991 figures.
- Population of Kerry could rise to between 140,000 and 150,000 by the year 2011, based on population projections.
- Largest population increases are likely to continue in the Tralee and Killarney areas.
- 8 households per km sq.
- High dependency ratio of 37.7%
- 3-4 Bedroom Suburban Semi cost between £95,000-£135,000